

[ANNKE | Help Center](#) > [FAQs](#) > [Others Configurations](#) > [Annke Vision](#)

Search



## Articles in this section



# ANNKE Vision - How to Connect IP Camera of Different Brand to ANNKE NVR by ONVIF?



Andy

2 years ago · Updated

Follow

Applies

to: N48PI/N44PI/N46PI/N44PAM/N48PAW/N46PCK/N88PCH/N48PBB/NCK800/H800/H500

Usually, the ANNKE POE NVR system we sell includes several POE IP cameras so that camera can be plugged into NVR's ethernet port directly.

But some customers may need to connect IP cameras from other brands to ANNKE POE NVR.

In this case, the camera should meet the 3 requirements below.

1. The IP camera must support the **ONVIF** protocol.
2. The IP camera's resolution **is equal to or lower than** the recording resolution of NVR. For example, if the NVR is 720P but the IP camera is a 1080P resolution, NVR is not able to display the image of this IP camera.



3. The camera should be connected to the router, by cable, or by wifi. Therefore, a wireless camera is also OK.

### Please follow the steps to set up:

1. Please connect the IP camera to the router (by ethernet cable or WiFi), and connect the camera to the power adapter.
2. Connect the NVR to **the same router** by network cable.
3. Please go to **Menu - Camera - IP camera** on the NVR to refresh the IP list to find the wireless IP camera.



Click the + icon to add the IP camera to the list.

If you find you cannot add the IP camera to the list and notice you “ **No more IP camera allowed**”



Write down the IP address for this IP camera, choose the channel which is no camera connected, click the edit icon to change some information.



Adding method: **Manual**

IP camera address: **Changed to the IP camera's address detected by the NVR.**

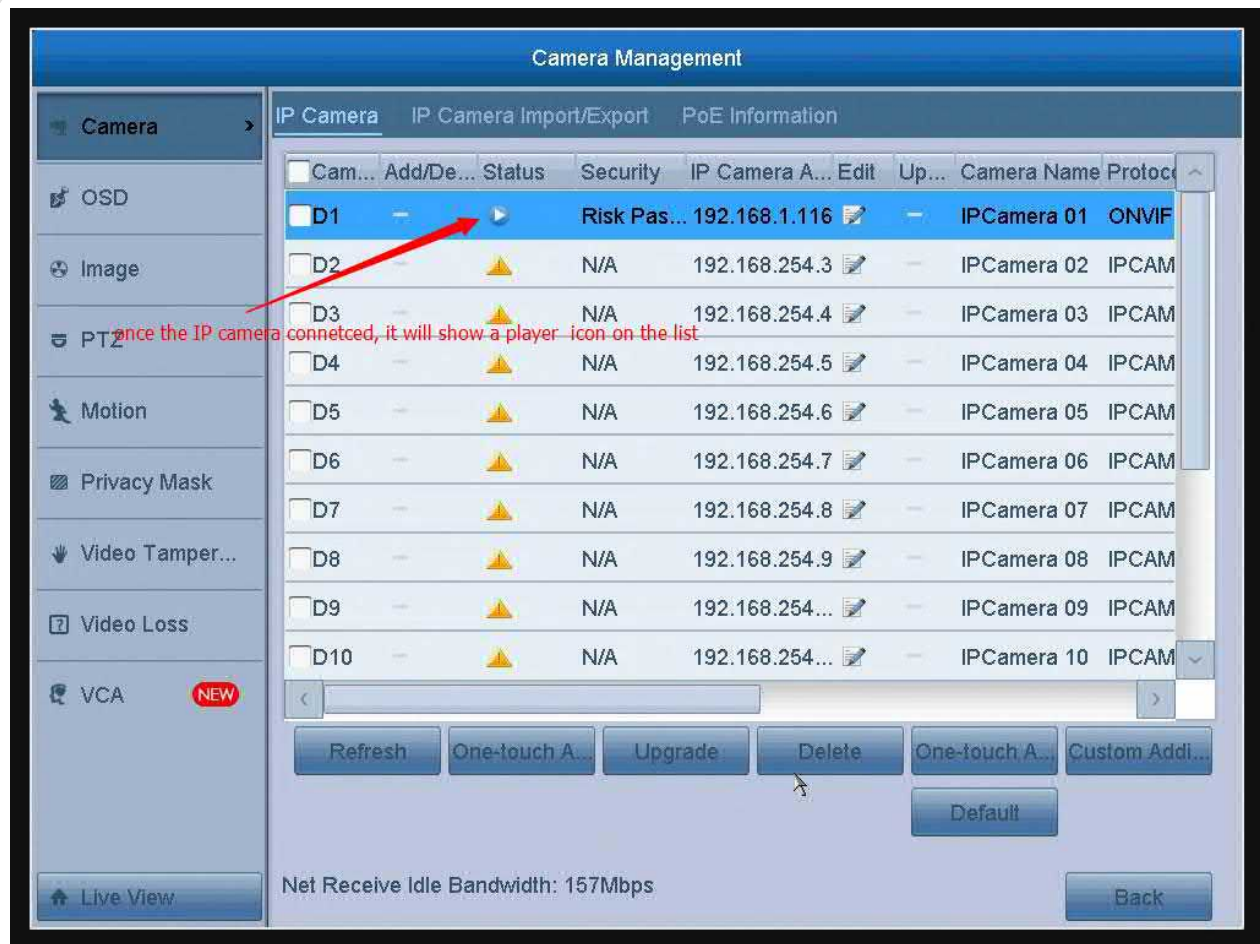
Protocol: **ONVIF**

User name: **admin**

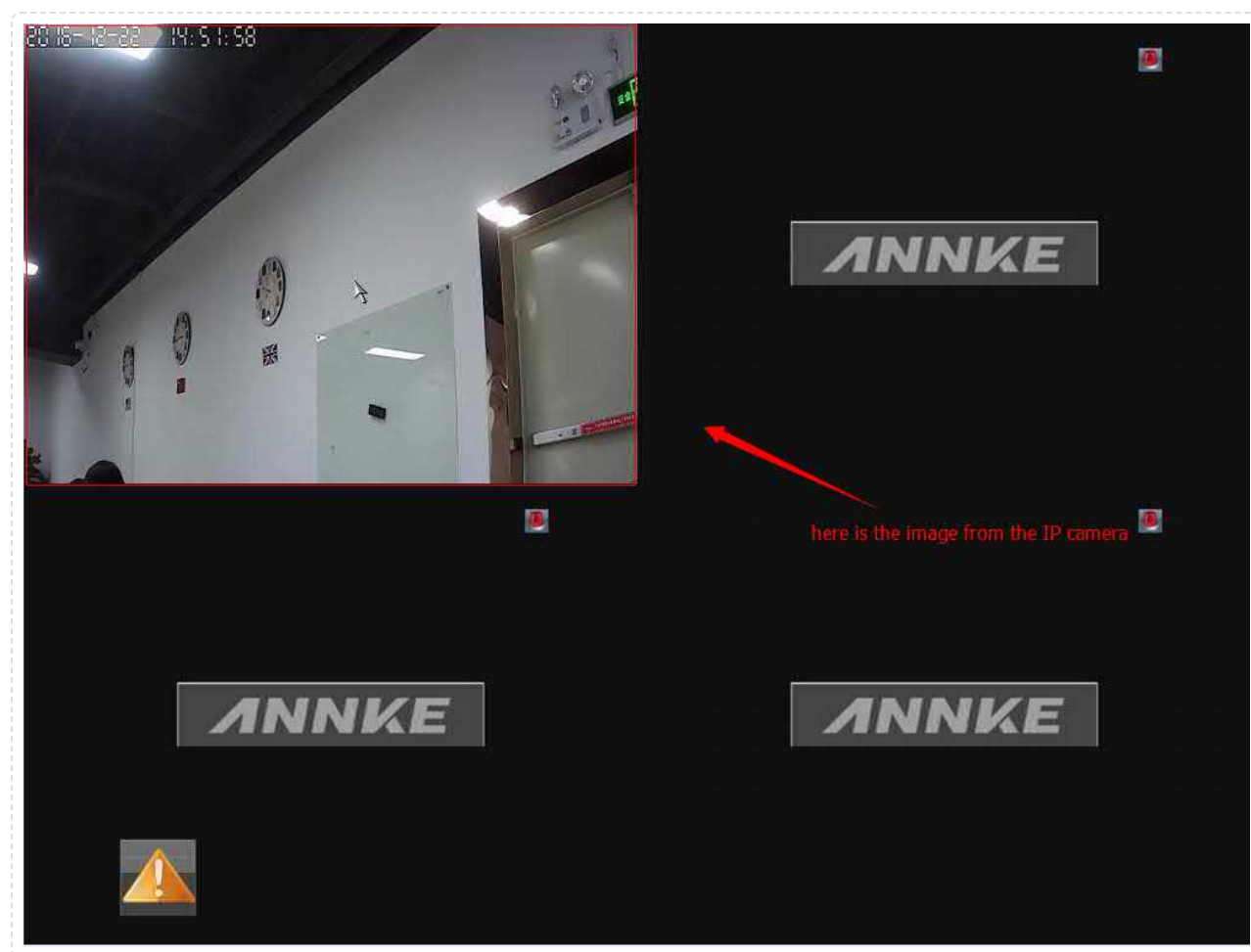
Admin password: **the password for the IP camera**

Other space just keeps the same as the system is given, click OK to save the information.





After that, you can see the IP camera's image display on the screen.



Was this article helpful?

✓ Yes

✗ No

57 out of 112 found this helpful

Have more questions? [Submit a request](#)

Return to top [↑](#)

### Recently viewed articles

[Annke Vision - How to Add an IP Camera to the POE NVR?](#)

[Annke Vision-How to Connect Third-Party Camera to ANNKE NVR by ONVIF? \(H800\)](#)

[Annke Vision - Specification of N88PCH](#)

[Annke Vision - How to Connect A Third-Party IP Camera to The DVR by ONVIF? \(S500\)](#)

[How to Install a Hard Disk Drive \(HDD\) to Your DVR/NVR?](#)

## Related articles

[Annke Vision - How to Add an IP Camera to the POE NVR?](#)

[Annke Vision - How to Connect Annke POE NVR with POE Camera via a POE Switch?](#)

[Annke Vision - The Firmware Version of the DVR/NVR System](#)

[ANNKE VISION - Reset Admin Password on Annke System via SADP Software](#)

[Annke Sight - How to Access DVR/NVR System on Computer Browser with its IP Locally?](#)

---

## Comments

0 comments

---

Article is closed for comments.

### PRODUCTS

[4G LTE Camera](#)

[WiFi Pan Tilt Camera](#)

[4K Outdoor PoE Cam](#)

[5MP 8-Channel DVR](#)

[4K 16-Channel NVR](#)

[4K 8CH PoE System](#)

[5MP WiFi NVR System](#)

[Outdoor Dual Lens PoE Cam](#)

### SUPPORT

[Help Center](#)

[Track Your Order](#)

[Download Center](#)

[Product Registration](#)

[Payment Method](#)

[Warranty & Return](#)

[Shipping & Delivery](#)

### COOP & UPDATES

[About US](#)[Contact US](#)[For Business](#)[Partner Program](#)[Love & Secure Prog.](#)[Affiliate Program](#)[DIY Your Camera Color](#)[NightChroma Top-Tech](#)

## CALL US

+1 833 717 0187

Free Call for US and CA

Toll Calls in Other Areas

7:00 am-7:30 pm, EST, Weekday



Copyright © 2023 ANNKE All Rights Reserved.

[PRIVACY POLICY](#)[TERMS & CONDITIONS](#)[DISCLAIMER](#)